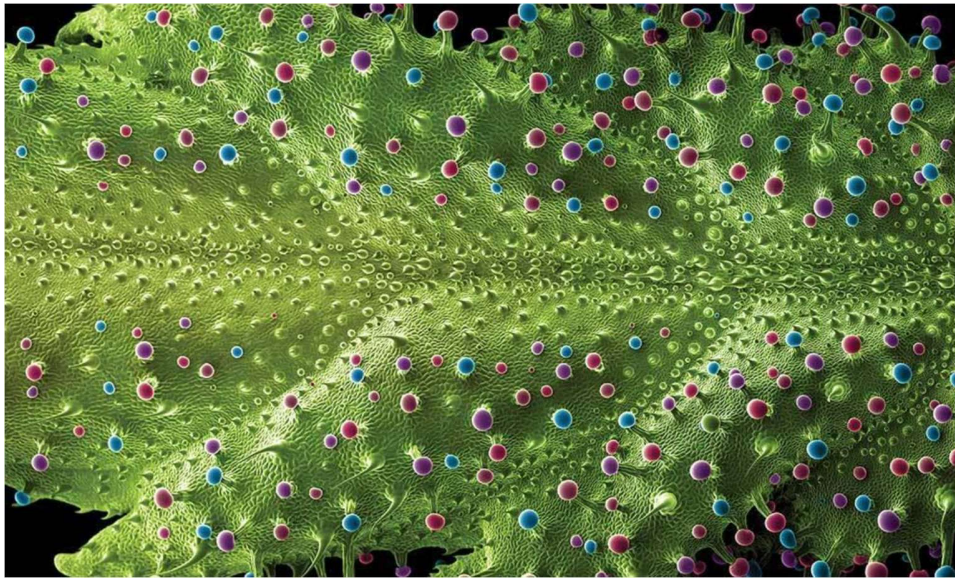


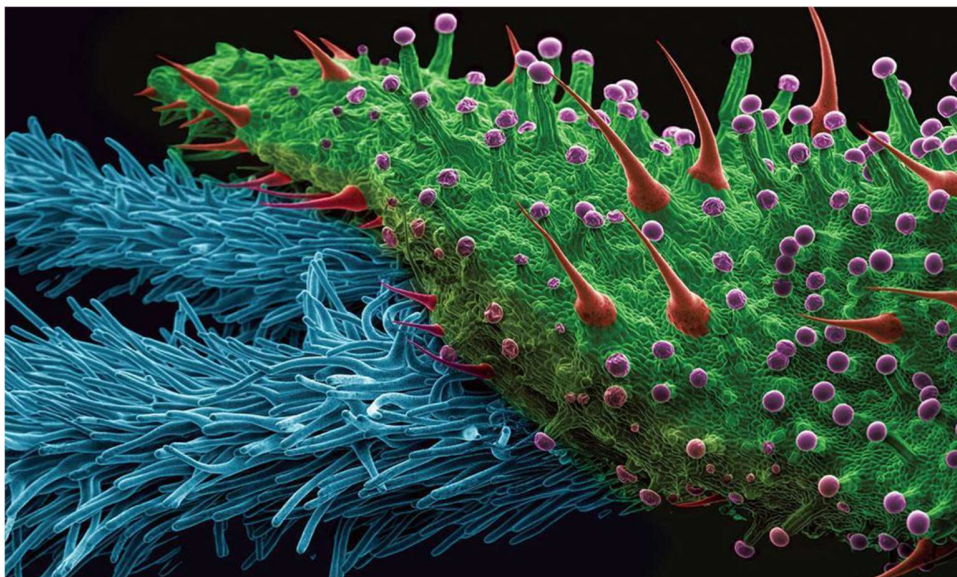
## MAGIC UNDER THE MICROSCOPE

Amazing photo of cannabis under the microscope was done by Ted Kinsman, an associate professor in the Photographic Sciences Department at Rochester Institute of Technology.

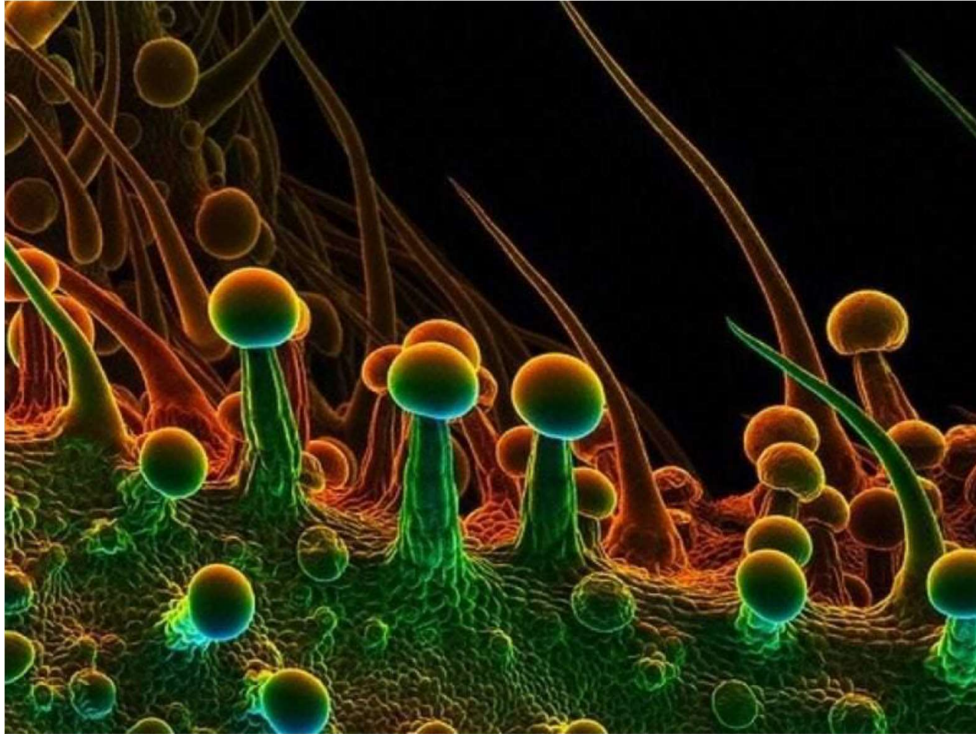
<https://hempfy.com/blogs/articles/cannabis-under-the-microscope>



A scanning electron microscope (SEM) image with false colour shows four types of trichomes on the edge of a bract leaf collected from a large bud. A bract is what encapsulates the female plant's reproductive parts and appears as green shaped leaves covered in resin glands.



The cannabis plant has had a complicated relationship with humans through the ages, and each image was selected with this in mind, highlighting unique and frequently bizarre features. This unusual photographic collection reveals the microscopic features of the marijuana plant as never before seen in one volume.



Cutting-edge scanning electron microscope images, combined with light micrographs and X-rays, bring this captivating plant vividly to life. You can find more images in [Ted Kinsman's Book](#) available on Amazon.